

ZONE	LYR	REVISIONS	DESCRIPTION	DATE	APPROVED
A	1	ECO 4004	INITIAL RELEASE	7-2-82	LDK/SL
B	1	ECO 4004	INCORPORATED	7-2-82	LDK/SL
C	1	ECO 4004	INCORPORATED	7-2-82	LDK/SL

- J4**
- 1 OV DB00 H
 - 2 DB01 H
 - 3 DB02 H
 - 4 DB03 H
 - 5 DB04 H
 - 6 DB05 H
 - 7 DB06 H
 - 8 DB07 H
 - 9 OV
 - 10
 - 11
 - 12
 - 13
 - 14
 - 15
 - 16
 - 17
 - 18 OV REST H
 - 19 OV
 - 20 SPARE

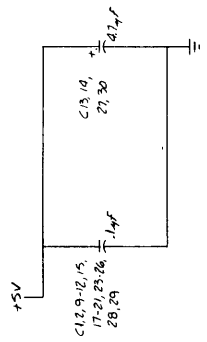
- J3**
- 1 OV (EX UP DOL)
 - 2 OV SPARE
 - 3 OV STOP H
 - 4 EXCLK L
 - 5 OV RESET L
 - 6
 - 7
 - 8
 - 9
 - 10
 - 11
 - 12
 - 13
 - 14
 - 15
 - 16
 - 17
 - 18
 - 19
 - 20
 - 21
 - 22
 - 23
 - 24
 - 25
 - 26

- J2**
- 1 RDP L
 - 2 RDI L
 - 3 RDT L
 - 4 RDP L
 - 5 RDT L
 - 6 RDP L
 - 7 RDT L
 - 8 RDP L
 - 9 RDT L
 - 10 RDP L
 - 11 RDT L
 - 12 RDP L
 - 13 RDT L
 - 14 RDP L
 - 15 RDT L
 - 16 RDP L
 - 17 RDT L
 - 18 RDP L
 - 19 RDT L
 - 20 RDP L
 - 21 RDT L
 - 22 RDP L
 - 23 RDT L
 - 24 RDP L
 - 25 RDT L
 - 26 RDP L
 - 27 RDT L
 - 28 RDP L
 - 29 RDT L
 - 30 RDP L
 - 31 RDT L
 - 32 RDP L
 - 33 RDT L
 - 34 RDP L
 - 35 RDT L
 - 36 RDP L
 - 37 RDT L
 - 38 RDP L
 - 39 RDT L
 - 40 RDP L
 - 41 RDT L
 - 42 RDP L
 - 43 RDT L
 - 44 RDP L
 - 45 RDT L
 - 46 RDP L
 - 47 RDT L
 - 48 RDP L
 - 49 RDT L
 - 50 RDP L

- J1**
- 1 OV
 - 2
 - 3
 - 4
 - 5
 - 6
 - 7
 - 8
 - 9
 - 10
 - 11
 - 12
 - 13
 - 14
 - 15
 - 16
 - 17
 - 18
 - 19
 - 20
 - 21
 - 22
 - 23
 - 24
 - 25
 - 26
 - 27
 - 28
 - 29
 - 30
 - 31
 - 32
 - 33
 - 34
 - 35
 - 36
 - 37
 - 38
 - 39
 - 40
 - 41
 - 42
 - 43
 - 44
 - 45
 - 46
 - 47
 - 48
 - 49
 - 50

- 2**
- 1 +5V
 - 2
 - 3
 - 4
 - 5
 - 6
 - 7
 - 8
 - 9
 - 10
 - 11
 - 12
 - 13
 - 14
 - 15
 - 16
 - 17
 - 18
 - 19
 - 20
 - 21
 - 22
 - 23
 - 24
 - 25
 - 26
 - 27
 - 28
 - 29
 - 30
 - 31
 - 32
 - 33
 - 34
 - 35
 - 36
 - 37
 - 38
 - 39
 - 40
 - 41
 - 42
 - 43
 - 44
 - 45
 - 46
 - 47
 - 48
 - 49
 - 50

NOTES: UNLESS OTHERWISE SPECIFIED:
 1. CAPACITANCE VALUES ARE IN MICROFARADS.
 2. RESISTANCE VALUES ARE IN OHMS, ±5% 1/4W.



LAST REFERENCE ASSIGNMENT USED

DIODE	C31
DIODE	C71
INTEGRATED CIRCUIT	U113
RESISTOR MODULE	RH16
RESISTOR	RT1
SWITCH	SW3

REF DES.	QANTS USED (PER TOTAL)	PART NUMBER
U7	2/8	7433B
U16	3/6	7451B
U27	1/8	7453Z
U28	1/3	74510
U29	1/2	7457A
U30	0/6	74500
U32	0/6	74500
U34	1/2	7457A
U35	0/6	74500
U37	3/4	74500
U39	1/4	7453Z
U47	3/4	74500
U49	2/3	74510
U53	2/3	74510
U65	1/4	74500
U68	5/6	74500
U70	2/4	7453Z
U82	3/6	74500

- 2**
- 1 +5V
 - 2
 - 3
 - 4
 - 5
 - 6
 - 7
 - 8
 - 9
 - 10
 - 11
 - 12
 - 13
 - 14
 - 15
 - 16
 - 17
 - 18
 - 19
 - 20
 - 21
 - 22
 - 23
 - 24
 - 25
 - 26
 - 27
 - 28
 - 29
 - 30
 - 31
 - 32
 - 33
 - 34
 - 35
 - 36
 - 37
 - 38
 - 39
 - 40
 - 41
 - 42
 - 43
 - 44
 - 45
 - 46
 - 47
 - 48
 - 49
 - 50

EMULEX CORPORATION
 SANTA ANA, CALIF.

EMULEX

FILE CODE ORT NO. 1002
 TITLE 1002 TAPE COUPLER
 SCALE 1/8"=1"

DATE 7-2-82
 DRAWN G. PAIR
 CHECKED
 ENGINEER
 APPROVED

DO NOT SCALE DRAWING

REVISIONS

ZONE LTR DESCRIPTION DATE APPROVED

1 ECO 4004 INITIAL RELEASE 7-2-82 LDK/SL

2 ECO 4004 INCORPORATED 7-2-82 LDK/SL

3 ECO 4004 INCORPORATED 7-2-82 LDK/SL

REVISIONS

ZONE LTR DESCRIPTION DATE APPROVED

1 ECO 4004 INITIAL RELEASE 7-2-82 LDK/SL

2 ECO 4004 INCORPORATED 7-2-82 LDK/SL

3 ECO 4004 INCORPORATED 7-2-82 LDK/SL

EMULEX CORPORATION
 SANTA ANA, CALIF.

EMULEX

FILE CODE ORT NO. 1002
 TITLE 1002 TAPE COUPLER
 SCALE 1/8"=1"

DATE 7-2-82
 DRAWN G. PAIR
 CHECKED
 ENGINEER
 APPROVED

DO NOT SCALE DRAWING

REVISIONS

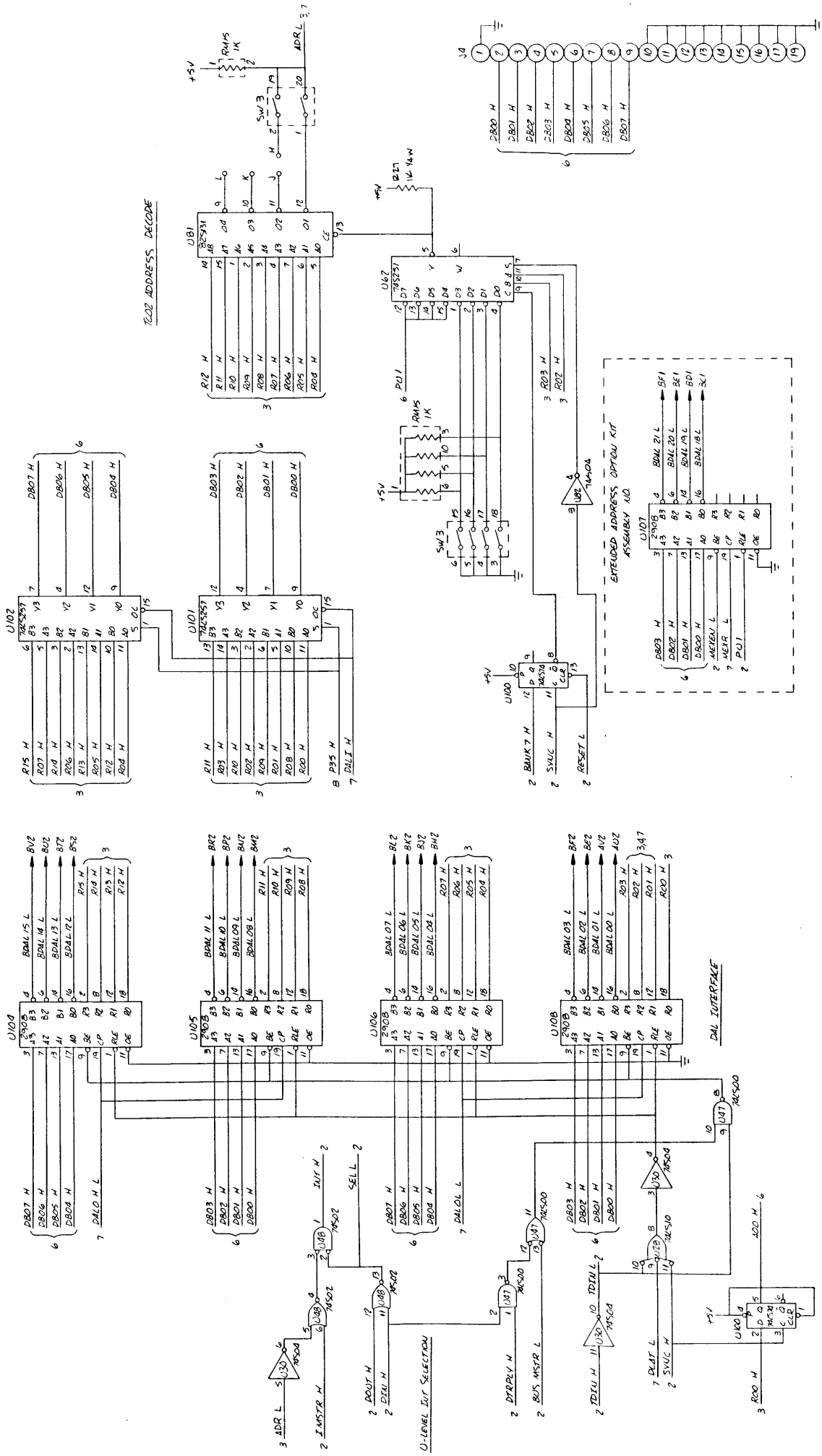
ZONE LTR DESCRIPTION DATE APPROVED

1 ECO 4004 INITIAL RELEASE 7-2-82 LDK/SL

2 ECO 4004 INCORPORATED 7-2-82 LDK/SL

3 ECO 4004 INCORPORATED 7-2-82 LDK/SL

202 ADDRESS DECODE



TEST SAMPLING

ALU FLAGS

ALU

